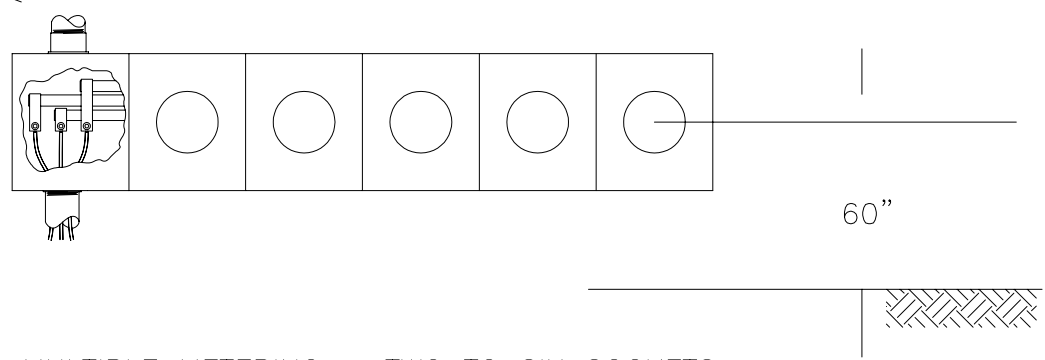


MULTIPLE METERING – GANG SOCKET

ALTERNATE SOURCE LOCATION



MULTIPLE METERING – TWO TO SIX SOCKETS

NOTES:

1. CONTACT SUSSEX REC PRIOR TO INSTALLATION OF GANG SOCKET.
2. MAIN DISCONNECT MEANS REQUIRED FOR SEVEN OR MORE SOCKETS.
3. HEIGHT NOT TO EXCEED 4 METER POSITIONS.
4. ALL SOCKETS (INSIDE AND OUT) AND BREAKERS MUST BE PERMANENTLY AND PLAINLY MARKED TO DESIGNATE THE PARTICULAR UNIT SERVED.
5. IF INSTALLATION CONTAINS POLY-PHASE METER SOCKETS, THESE MUST BE PLAINLY MARKED.
6. METER SOCKET(S) MAY BE CONNECTED TO AN EXTERNAL GROUND ROD IF REQUIRED BY LOCAL INSPECTION AUTHORITIES.
7. FOR CUSTOMER/ COMPANY RESPONSIBILITIES SEE SERVICE GUIDE 19.